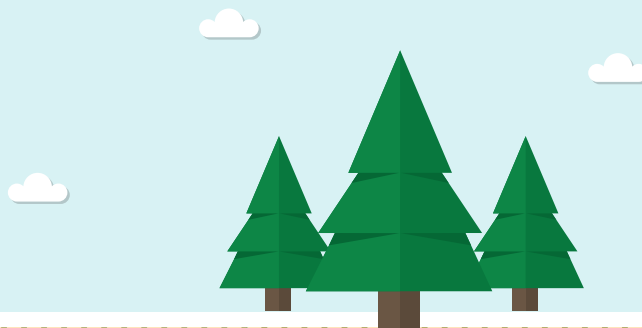


# FSC® CERTIFIED PAPER: The Gold Standard in Environmental Sustainability



Third-party fiber certification systems ensure sustainable forest management and proper replanting and reforestation efforts. Yet, there are significant differences between the three major certifications. We believe Forest Stewardship Council® is the best and highest standard for forest certification.

**Forest Stewardship Council (FSC®),  
Programme for the Endorsement of Forest Certification (PEFC™)  
and the Sustainable Forestry Initiative (SFI®)**

## INTERNATIONAL RECOGNITION AND STANDARD



FSC® and PEFC™ are both internationally recognized

SFI® certification is only recognized in the United States and Canada<sup>1</sup>

**1**   
**48** 

FSC® has one global standard and ensures that all wood and paper products are held to the same standard regardless of origin

PEFC™ endorses fiber certifications within a country and currently recognizes 48 different forest and fiber certification schemes<sup>2</sup>

## PROTECTION OF OLD GROWTH FORESTS



**120**  
+ years

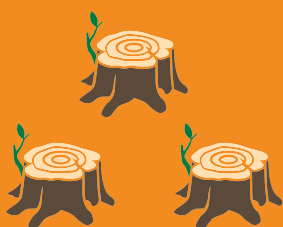


Old Growth Forests are natural forests that have developed for more than a century without extreme disturbance (e.g. fire, windstorm, logging)

FSC® requires on the ground maintenance or restoration of native biodiversity and protection of rare old-growth forests<sup>3</sup>, and has performance-based requirements and metrics that must be monitored and followed

PEFC™ and SFI® require programs for forest management. However, there is no requirement that program outcomes are monitored or measured.<sup>3-4</sup>

## CLEARCUTTING



**120**  
acres



Clearcutting occurs when you cut down all trees in an area. Selective cutting - when only some trees are cut down so the growth of other trees is unaffected - is preferred

FSC® uses ecological-science-based criteria to determine the allowed size of clear-cuts in specific areas to ensure ecological functions and values remain intact after timber harvesting<sup>5</sup>

SFI® states the average size of a clear-cut cannot exceed this size<sup>4</sup>, but this can be manipulated by combining large clear-cut areas with smaller areas

PEFC™ clear-cut requirements are based on the nationally endorsed certification program<sup>3</sup>

## INDIGENOUS RIGHTS



FSC® protects indigenous rights, both legal and customary, on public and private lands, territories and resources affected by forest management activities

While SFI® encourages engagement and communication, FSC® requires the "free, prior, and informed consent" of indigenous groups<sup>4</sup>

All PEFC™ certifications require adherence to the UN Declaration on the Rights of Indigenous Peoples, while specific criteria may vary based on each certification<sup>3</sup>

## PESTICIDE USE



nearly  
**400**  
**86**

FSC® has a more comprehensive list of restricted pesticides<sup>6</sup>

PEFC™ and SFI® restrict the use of 1a and 1b pesticides designated by the World Health Organization (WHO) except in very rare circumstances, resulting in restrictions on 86 pesticides<sup>3-4</sup>

## SOFIDEL'S COMMITMENT TO SUSTAINABLE FORESTRY



**100%**

Sofidel is committed to a 100% deforestation free supply chain



Sofidel prioritizes using FSC® certified virgin fiber as a raw material to achieve this goal



Using FSC® certified pulp ensures a higher-quality fiber and produces less waste than fibers made from recycled paper

**69.3%**

Sofidel used nearly 70% FSC®-certified virgin fiber in its operations in 2019, more than its U.S. competitors

<sup>1</sup> "The Sustainable Forestry Initiative Highlights Benefits of Sustainable Forests in Canada and the United States." SFI® Program, 2 Apr. 2020, [www.sfi-program.org/the-sustainable-forestry-initiative-highlights-benefits-of-%E2%80%A8sustainable-forests-in-canada-and-the-united-states/](http://www.sfi-program.org/the-sustainable-forestry-initiative-highlights-benefits-of-%E2%80%A8sustainable-forests-in-canada-and-the-united-states/)

<sup>2</sup> "Facts and Figures." PEFC™, [www.pefc.org/discover-pefc/facts-and-figures](http://www.pefc.org/discover-pefc/facts-and-figures)

<sup>3</sup> PEFC™ Sustainable Forest Management - Requirements

<sup>4</sup> SFI® 2015-2019 Standards – Section 2: Forest Management

<sup>5</sup> FSC® US Forest Management Standard 2018-2020 Revision

<sup>6</sup> FSC® Lists of Highly Hazardous Pesticides

FSC® is the gold standard in the paper industry because of its stricter standards and greater dedication to environmental sustainability and protection. Sofidel will always be committed to providing a product that helps strengthen our forested land and fight deforestation.

To learn more, visit [www.sofidel.com/en/sustainability](http://www.sofidel.com/en/sustainability)

