

Protecting surfaces while disinfecting

How to clean with confidence using Clorox[®] Disinfectant Cleaners

Shared and commonly touched surfaces are frequently cleaned and disinfected

Routine cleaning and disinfecting in public and private spaces can help prevent the spread of germs. Now that surfaces are being cleaned and disinfected more frequently, it's important to ensure that this doesn't cause any damage to surfaces or leave behind unsightly residue.



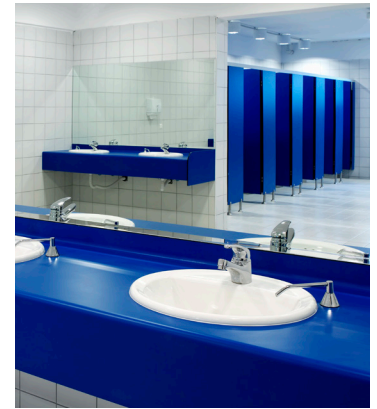
Athletic facilities: Exercise and fitness equipment, weights, reception areas, locker rooms and showers.



Schools: Playground equipment, door handles, sink handles, desks and drinking fountains.



Offices: Tables, doorknobs, light switches, countertops, handles, desks, phones, keyboards, elevator buttons.



Restrooms: Door handles, sink handles, toilets, countertops, soap dispensers and light switches.

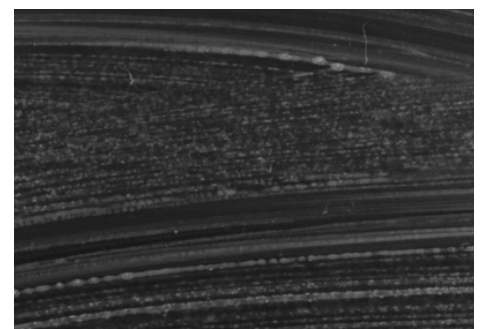
Understand the difference between residue and surface damage

SURFACE RESIDUE: After a disinfectant applied to a surface has dried, some of the ingredients in the product will be left behind on the surface.

The type, color and texture of the surface material and the ingredients in the disinfectant will determine what the residue looks like on the surface.

- ▶ On a smooth surface, the disinfectant may form small beads, which when dry may leave visible spots or circles.
- ▶ If the surface is textured, or if the disinfectant spreads out evenly on the surface, the residue may not be easy to see but may feel sticky or slippery to touch.

SURFACE DAMAGE: After cleaning and disinfecting a surface for an extended period, it may start to look dull or pitted, or you may see hairline cracks on the surface. In such cases, the surface has been damaged.



Tips to remove residue and reduce the risk of surface damage

- ▶ Select products that are compatible with most of the surfaces and materials in your facility.
- ▶ Follow instructions from manufacturers for cleaning and care of surfaces or equipment. Manufacturer instructions may provide recommendations for the types of products that they know are safe to use on these surfaces.
- ▶ Wipe surfaces with a clean damp cloth to remove residue and reduce the risk of damage. Look at the star rating of the Clorox® disinfectant and the surface material to help you decide when to do this. As you continue to work hard to provide your customers with healthier and safer environments, consider the type of surface materials being cleaned and which disinfectant you want to use. Following these tips to eliminate residue and reduce the potential for surface damage will help keep your facility disinfected, safe and looking good.



The Clorox® Compatible™ Star Rating System

Clorox uses a star rating system to account for the varying effects of cleaning and disinfecting products on surface materials. This system grades the compatibility of our products against a range of hard, nonporous materials such as plastics, metals, tile, quartz, marble and granite. This rating system helps users balance the benefits of cleaning and disinfecting against the risk of surface damage. It provides guidance on when you might need to wipe surfaces with a clean damp cloth to remove excess disinfectant to protect the surface.

3-Star System



No visible surface damage or effect on the material is likely to occur when used according to label directions. No change to the integrity of the material is expected.



Some visible surface damage such as tarnishing or clouding may be seen with long-term exposure. Little to no effect on material integrity is expected. Periodic wiping of surfaces with a clean damp cloth to remove residue can help to minimize damage.



Visible damage to the surface is likely to occur with long-term exposure, and some effect on material integrity is possible. Surfaces should be wiped with a clean damp cloth immediately after the contact time has been reached to reduce the risk of damage. Users should evaluate the risk of surface damage vs. the benefits of disinfectant efficacy against pathogens to determine whether the product is appropriate for use.

Compatibility of Clorox® Disinfectants with Common Surface Materials*



| | Material | Examples | Clorox® Disinfecting Wipes | Clorox® 4 in One Disinfecting & Sanitizer | Clorox® Disinfecting Spray | Clorox® Germicidal Bleach 2400 ppm | Clorox® Germicidal Bleach 7800 ppm | Clorox® Clean-Up Disinfectant with Bleach | Clorox® Disinfecting Bio Stain & Odor Remover | Clorox® EcoClean™ Disinfecting Cleaner |
|----------------------|------------------------------------|--|----------------------------|---|----------------------------|------------------------------------|------------------------------------|---|---|--|
| PLASTICS OR POLYMERS | ABS | Keyboards, computer components | ★ ★ ★ | ★ ★ ★ | ★ ★ ★ | ★ ★ ★ | ★ ★ ★ | ★ ★ ★ | ★ ★ ★ | ★ ★ ★ |
| | Acrylic | Screens | ★ ★ ★ | ★ ★ ★ | ★ ★ ★ | ★ ★ ★ | ★ ★ ★ | ★ ★ ★ | ★ ★ ★ | ★ ★ ★ |
| | High density polyethylene | Containers, trash cans, recycling bins, toys | ★ ★ ★ | ★ ★ ★ | ★ ★ ★ | ★ ★ ★ | ★ ★ ★ | ★ ★ ★ | ★ ★ ★ | ★ ★ ★ |
| | Polyvinyl chloride | Window and door frames, car interiors | ★ ★ ★ | ★ ★ ★ | ★ ★ ★ | ★ ★ ★ | ★ ★ ★ | ★ ★ ★ | ★ ★ ★ | ★ ★ ★ |
| | Polycarbonate | Room dividers, safety glass, electronics | ★ ★ ★ | ★ ★ ★ | ★ ★ ★ | ★ ★ ★ | ★ ★ ★ | ★ ★ | ★ ★ ★ | ★ ★ ★ |
| | Polypropylene | Car interiors, medical devices | ★ ★ ★ | ★ ★ ★ | ★ ★ ★ | ★ ★ ★ | ★ ★ ★ | ★ ★ ★ | ★ ★ ★ | ★ ★ ★ |
| | Vinyl | Flooring | ★ ★ ★ | ★ ★ ★ | ★ ★ ★ | ★ ★ ★ | ★ ★ ★ | ★ ★ ★ | ★ ★ ★ | ★ ★ ★ |
| | Corian® | Counters, sinks | ★ ★ ★ | ★ ★ ★ | ★ ★ ★ | ★ ★ ★ | ★ ★ ★ | ★ ★ ★ | ★ ★ ★ | ★ ★ ★ |
| METALS | Formica® | Countertops, tabletops | ★ ★ ★ | ★ ★ ★ | ★ ★ ★ | ★ ★ ★ | ★ ★ ★ | ★ ★ ★ | ★ ★ ★ | ★ ★ ★ |
| | Aluminum 6061 | Chairs, wheelchairs | ★ ★ ★ | ★ ★ | ★ ★ | ★ ★ | ★ ★ | ★ ★ | ★ ★ ★ | ★ ★ ★ |
| | Stainless steel 304 | Appliances, sinks, cabinets | ★ ★ ★ | ★ ★ ★ | ★ ★ ★ | ★ ★ | ★ ★ | ★ ★ | ★ ★ ★ | ★ ★ ★ |
| OTHER HARD SURFACES | Chrome | Bathroom and kitchen fixtures | ★ ★ ★ | ★ ★ ★ | ★ ★ ★ | ★ ★ | ★ ★ | ★ ★ ★ | ★ ★ ★ | ★ ★ ★ |
| | Glass | Windows, tabletops | ★ ★ ★ | ★ ★ ★ | ★ ★ ★ | ★ ★ ★ | ★ ★ ★ | ★ ★ ★ | ★ ★ ★ | ★ ★ ★ |
| | Ceramic Tile Sealed granite | Countertops | ★ ★ ★ | ★ ★ ★ | ★ ★ ★ | ★ ★ ★ | ★ ★ ★ | ★ ★ ★ | ★ ★ ★ | ★ ★ ★ |
| | Sealed marble | Countertops, shower and bath walls | ★ ★ ★ | ★ ★ ★ | ★ ★ ★ | ★ ★ ★ | ★ ★ ★ | ★ ★ ★ | ★ ★ ★ | ★ |
| | Glazed ceramic | Countertops, shower and bath walls | ★ ★ ★ | ★ ★ ★ | ★ ★ ★ | ★ ★ ★ | ★ ★ ★ | ★ ★ ★ | ★ ★ ★ | ★ ★ ★ |
| Glazed porcelain | Countertops, shower and bath walls | ★ ★ ★ | ★ ★ ★ | ★ ★ ★ | ★ ★ ★ | ★ ★ ★ | ★ ★ ★ | ★ ★ ★ | ★ ★ ★ | |

Corian® is a registered trademark of DuPont Building Innovations.

Formica® is a registered trademark of The Diller Corporation.

* When used as directed

Updated November 2022



For more information, contact your Clorox sales representative.
Call: 1-800-492-9729
Visit: www.cloroxpro.com