



Dial[®]
PROFESSIONAL
Versa[™]



Bring versatility
to your facility.

A contemporary dispensing system featuring
amenity and hand care refill products.





DIAL® PROFESSIONAL

Versa™ Dispensing System

ADAPTABLE: Customizable system with multiple combinations of 6 unique product types.

PRACTICAL: Creates housekeeping efficiency by improving room turnover while eliminating opportunities for contamination.

MODERN: Sophisticated yet simple dispenser with recyclable refill cartridges replacing traditional single-use amenity and pump bottles.

Dispenser Dimensions: 8.75" (H) x 3.75" (W) x 3.375" (D)
Recommended in-shower placement is below shower head at a chest-level height

Get the convenience of versatility with Dial® Professional Versa™.

Take a Closer Look...

1. Keyed locking mechanism helps prevent tampering, cross-contamination and vandalism.
2. Reservoir holds 2.36 oz. (70 mL) of formula. It ensures that no product is wasted and provides uninterrupted service to customers.
3. 15 oz. (443 mL) refill cartridge provides fresh supply of product and prevents stagnant formula build up.
4. Gravity-fed refill cartridge bottle helps reduce product waste.
5. Bottle is induction sealed for additional safety. The seal is auto punctured when installed in the dispenser, allowing for a mess-free installation.
6. Each push dispenses 0.03 oz. (1 mL).



BLACK



LIGHT GRAY

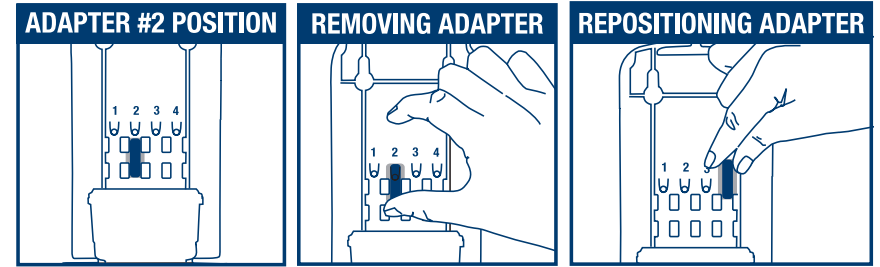


DARK GRAY

Keyed locking mechanism helps prevent tampering, cross-contamination and vandalism



Product Specific Refill Bottles



Adjustable adapter positions prevent cross contamination:
Body Wash **Shampoo** **Conditioner** **Hand Soap**
 Adapter position #1 Adapter position #2 Adapter position #3 Adapter position #4

Customizable Solutions

Install **one, two or three** dispensers according to your needs. The dispensers seamlessly nest to create a clean look. Ask us about our dispenser window label customization options.





Dial® Versa™ Dispensing System + Dial® Branded Refills



**Dial® Versa™ Black/White
Cartridge Bottle Refill Dispenser**

Case UPC 17000 34049 Cs Pk 6

**Dial® Versa™ Black/White
Flex Bag-Pouch Refill Dispenser**

Case UPC 17000 34067 Cs Pk 6



**Dial® Versa™ Light Gray
Cartridge Bottle Refill Dispenser**

Case UPC 17000 34037 Cs Pk 6

**Dial® Versa™ Light Gray
Flex Bag-Pouch Refill Dispenser**

Case UPC 17000 34055 Cs Pk 6



**Dial® Versa™ Dark Gray/Light Gray
Cartridge Bottle Refill Dispenser**

Case UPC 17000 34043 Cs Pk 6

**Dial® Versa™ Dark Gray/Light Gray
Flex Bag-Pouch Refill Dispenser**

Case UPC 17000 34061 Cs Pk 6



Amenity Cartridge Refills



Dial® Spring Water® Body Wash – Refill

Case UPC 17000 99804 Cs Pk 6/15 oz



Dial® Salon Series Shampoo – Refill

Case UPC 17000 98963 Cs Pk 6/15 oz

Dial® Salon Series Conditioner – Refill

Case UPC 17000 98960 Cs Pk 6/15 oz



Dial® Radiant Citrus® Shampoo – Refill

Case UPC 17000 98954 Cs Pk 6/15 oz

Dial® Radiant Citrus® Conditioner – Refill

Case UPC 17000 98957 Cs Pk 6/15 oz



Hand Care Cartridge Refills



**Dial® Gold Antibacterial
Liquid Hand Soap – Refill**

Case UPC 17000 98561 Cs Pk 6/15 oz



**Dial® Basics Hypoallergenic
Liquid Hand Soap – Refill**

Case UPC 17000 33827 Cs Pk 6/15 oz



Hand Care Pouch Refills



Dial® Hand Sanitizer Gel Pouch – Refill

Case UPC 17000 12258 Cs Pk 6/15 oz



Dial® Moisturizing Lotion Pouch – Refill

Case UPC 17000 12260 Cs Pk 6/15 oz



Product Designation:	Registration #:	Category Code:
Dial® Professional Gold Antibacterial Liquid Hand Soap	155014	E2
Dial® Professional Antibacterial Gel Hand Sanitizer	155012	E3

Registration Program Guidelines for Proprietary Substances and Nonfood Compounds: January 11, 2021



TRUSTED BRANDS, AWAY FROM HOME.

For more information visit our website: dialprofessional.com, or call 1-800-253-3425

©2023 Henkel Corporation. All Rights Reserved.

*This product meets Green Seal® Standard GS-41A based on effective performance and protective limits on VOCs and human & environmental toxicity. GreenSeal.org.

