

Coronavirus (COVID-19)

With cases of **COVID-19**, the disease caused by the virus SARS-CoV-2, now confirmed in the United States, we understand the need to structure a well-thought out plan to prevent the virus from spreading.

Currently, there is no product on the market that has been tested against SARS-CoV-2, the virus that causes COVID-19.

Prevention:

Hand-Washing: Hands should be washed often with soap and water for at least 20 seconds, especially after going to the bathroom, before eating, and after blowing your nose, coughing, or sneezing. If soap and water are not readily available, an alcohol-based hand sanitizer with at least 60% alcohol can be used. Always wash hands with soap and water if hands are visibly dirty. Avoid touching your eyes, nose, and mouth with unwashed hands.

Coughing and Sneezing: Cover your mouth and nose with a tissue when coughing or sneezing. Put used tissues in the trash. If a tissue is not available, cough or sneeze into an upper sleeve, not hands.

Clean and Disinfect: Use an EPA-registered disinfectant on potentially contaminated surfaces.

Emerging Viral Pathogen Claims:

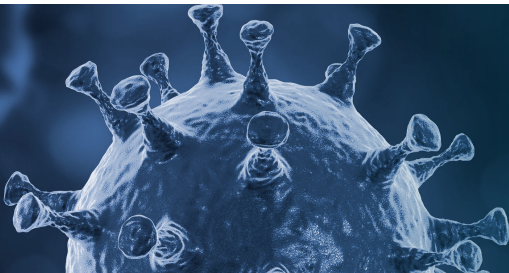
Midlab® offers select MAXIM® products that qualify for emerging viral pathogen claims per the EPA's **'Guidance to Registrants: Process for Making Claims Against Emerging Viral Pathogens not on EPA-Registered Disinfectant Labels'** when used in accordance with the appropriate use directions indicated in the chart below. These products meet the criteria to make claims against certain emerging viral pathogens from the following viral categories:

- Enveloped viruses
- Large non-enveloped viruses
- Small non-enveloped viruses

For an emerging viral pathogen that is a/an...	...follow the directions for use for the following organisms on the label:	
Enveloped virus	<ul style="list-style-type: none"> • Human Rotavirus • Rhinovirus Type 39 • Hepatitis A Virus 	<ul style="list-style-type: none"> • Poliovirus Type 1 • Canine Parvovirus
Large non-enveloped virus	<ul style="list-style-type: none"> • Rhinovirus Type 39 • Hepatitis A Virus 	<ul style="list-style-type: none"> • Poliovirus Type 1 • Canine Parvovirus
Small non-enveloped virus §	<ul style="list-style-type: none"> • Hepatitis A Virus § • Poliovirus Type 1 § 	<ul style="list-style-type: none"> • Canine Parvovirus

§ The directions for use for the supporting viruses with the longest contact time should be used for small nonenveloped emerging viruses. In this case, 10 minutes for the indicated viruses.

Product Name	Reorder #
No Acid	035200
GSC Germicidal Spray Cleaner	042000



Refer to the CDC website at <https://www.cdc.gov/coronavirus/index.html> for information about SARS-CoV-2 (formerly 2019-nCoV).

According to the CDC, if there are no available EPA-registered hospital grade disinfectants that have an approved emerging viral pathogen claim for COVID-19, products with label claims against human coronaviruses should be used according to label instructions.

OTHER MAXIM[®] DISINFECTANTS

Carry Label Claims Against Human Coronaviruses

Product Name	Reorder #	Product Name	Reorder #
AFBC	036000	Lemon Detergent Disinfectant	047000
All Surface Bathroom Cleaner	038400	Hi-Q Disinfectant	047300
Neutral Disinfectant Lemon Scent	040200	Fresh Scent	047400
Neutral Disinfectant Mint Scent	040400	Non Acid Bathroom Disinfectant Cleaner	651600
Neutral Disinfectant Pine Scent	040700	Hi-Q Disinfectant	651700
Neutral Disinfectant Fresh Scent	040800		



Refer to the CDC website at <https://www.cdc.gov/coronavirus/index.html> for information about SARS-CoV-2 (formerly 2019-nCoV).